

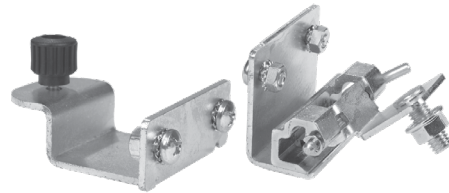
MOUNTING PANELS

SWING-OUT PANEL KITS FOR TYPE 4 & 12 ENCLOSURES

Designed to allow a standard subpanel to be installed in the front of an enclosure and to swing out of the enclosure. Kits consist of heavy gauge brackets and hinges. Installed by drilling small hole in the side of the enclosure and bolting the bracket in place. Sealing washers are provided to insure that the enclosure will meet original standards after installation. For use in any Type 4 & 12 LP style wall-mount enclosure where A x B dimensions are 12" x 12" or larger.

Provided with UL Recognized sealing washer to maintain Environmental Rating of the enclosure.

Catalog No.	Description	Product Code
SCE-NADFK	Swing Panel Kit (used with panels 30 inches and under)	P2
SCE-NADFK-3	Swing Panel Kit (used with panels over 30 inches)	P2
SCE-NADFKSS	Swing Panel Kit - Stainless Steel	P2

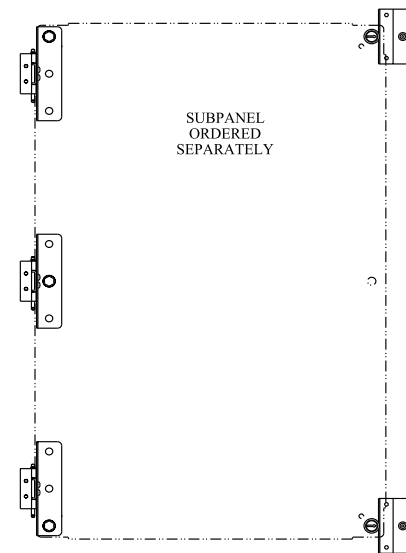


SWING-OUT PANEL KITS FOR ENVIROLINE®, WALL-MOUNT, 3R HINGED ENCLOSURES

Designed to allow a standard subpanel to be installed in the front of an enclosure and to swing out of the enclosure. Kit consists of heavy gauge brackets, hinges, and mounting hardware. Installed by detaching door hinge from enclosure and installing swing-out panel kit to the existing holes and hinge supplied with the enclosure. Made of steel and zinc plated.

Provided with UL Recognized sealing washer to maintain Environmental Rating of the enclosure.

Catalog No.	Enclosure Height	Product Code
SCE-ELSP	12 to 16	P2
SCE-ELSP3	20 to 60	P2



SWING-OUT PANEL KITS FOR POLYCARBONATE ENCLOSURES

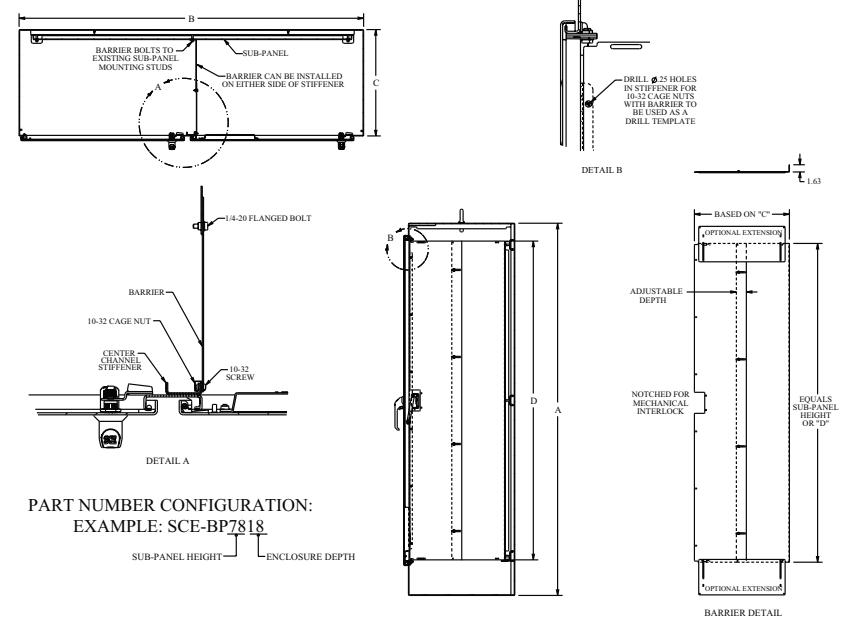
Designed to allow a standard subpanel to be installed in the front of an enclosure and to swing out of the enclosure. Kits consist of polycarbonate hinged mounting brackets. Installed on internal enclosure channels and adjustable to depth of enclosure.

Catalog No.	Qty Per Kit	Product Code
SCE-PCSP	4	F1



MOUNTING PANELS

Catalog No.	Height (A)	Width (B)	Use with Subpanel Height	Use with Enclosure Depth	Product Code
SCE-BP2108	21.00	6.84	21	8	P2
SCE-BP2710	27.00	8.84	27	10	P2
SCE-BP3212	32.00	10.84	32	12	P2
SCE-BP3312	33.00	10.84	33	12	P2
SCE-BP3316	33.00	14.80	33	16	P2
SCE-BP3812	38.00	10.44	38	12	P2
SCE-BP3912	39.00	10.44	39	12	P2
SCE-BP4412	44.00	10.44	44	12	P2
SCE-BP5612	56.00	10.44	56	12	P2
SCE-BP5618	56.00	16.44	56	18	P2
SCE-BP5624	56.00	22.44	56	24	P2
SCE-BP5712	57.00	10.44	57	12	P2
SCE-BP6018	60.00	16.44	60	18	P2
SCE-BP6024	60.00	22.44	60	24	P2
SCE-BP6812	68.00	10.44	68	12	P2
SCE-BP6818	68.00	16.44	68	18	P2
SCE-BP6824	68.00	22.44	68	24	P2
SCE-BP7212	72.00	10.44	72	12	P2
SCE-BP7218	72.00	16.44	72	18	P2
SCE-BP7224	72.00	22.44	72	24	P2
SCE-BP7818	78.00	16.44	78	18	P2
SCE-BP7824	78.00	22.44	78	24	P2
SCE-BP7820	78.00	17.44	78	20	P2



Catalog No.	For Use With	Product Code
SCE-BPEX12	12 Inch Wide Barrier Plates	P2
SCE-BPEX18	18 Inch Wide Barrier Plates	P2
SCE-BPEX24	24 Inch Wide Barrier Plates	P2
SCE-BPIC	Barrier Plate Interlock Cover	P2

Designed to be used with the Barrier Plates to extend the barrier, closing up the space between barrier plate and top or bottom of enclosure. Made of heavy gauge carbon steel and powder coated white.

BARRIER PLATES

Designed to be installed on the back panel of enclosures to provide protection against Arc Flash, the height of the subplate, and allowing separation of the high voltage and low voltage within the enclosure. Made of heavy gauge carbon steel and powder coated white. Mounting hardware included.

BARRIER EXTENSION FOR BARRIER PLATES